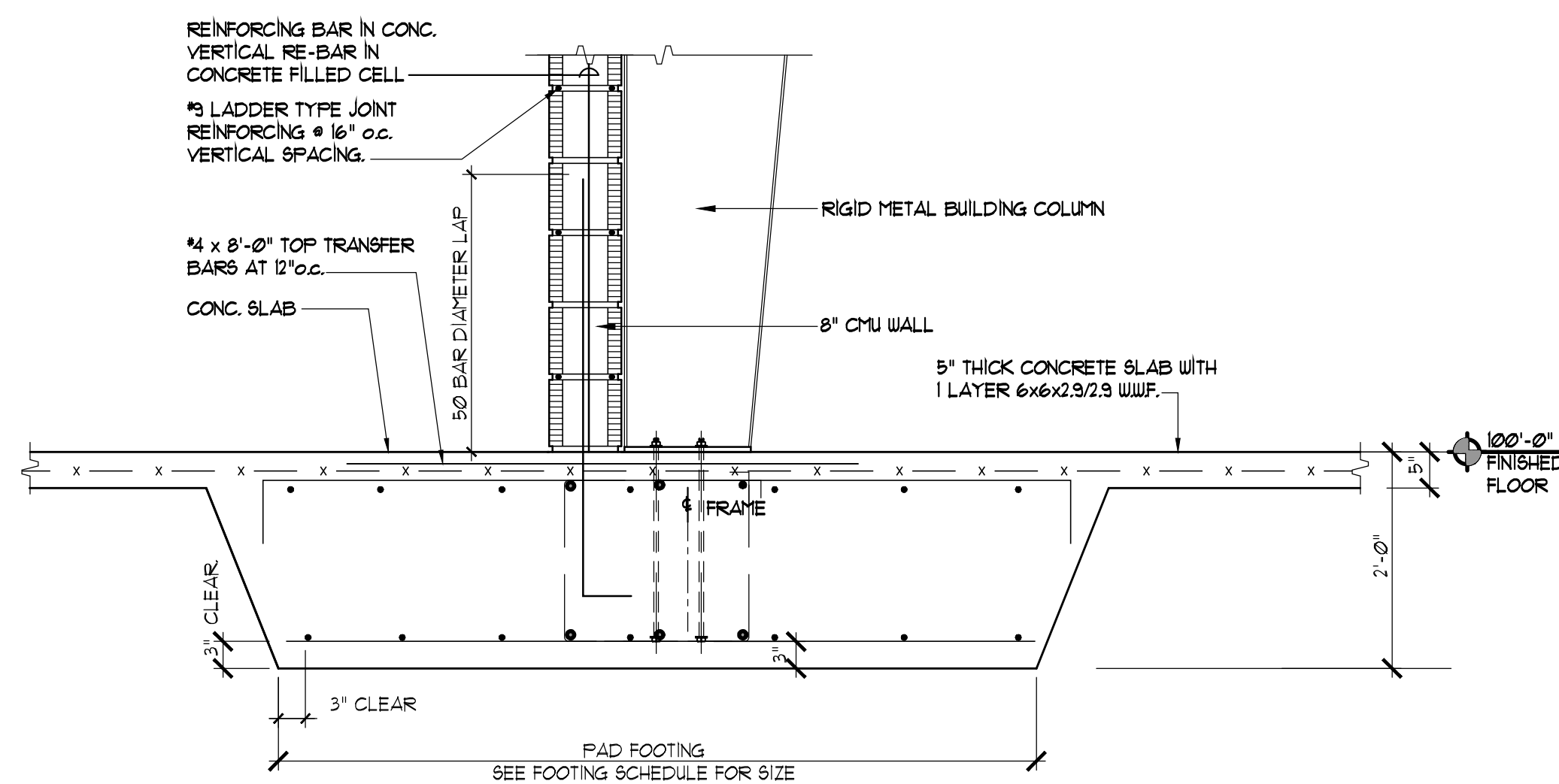
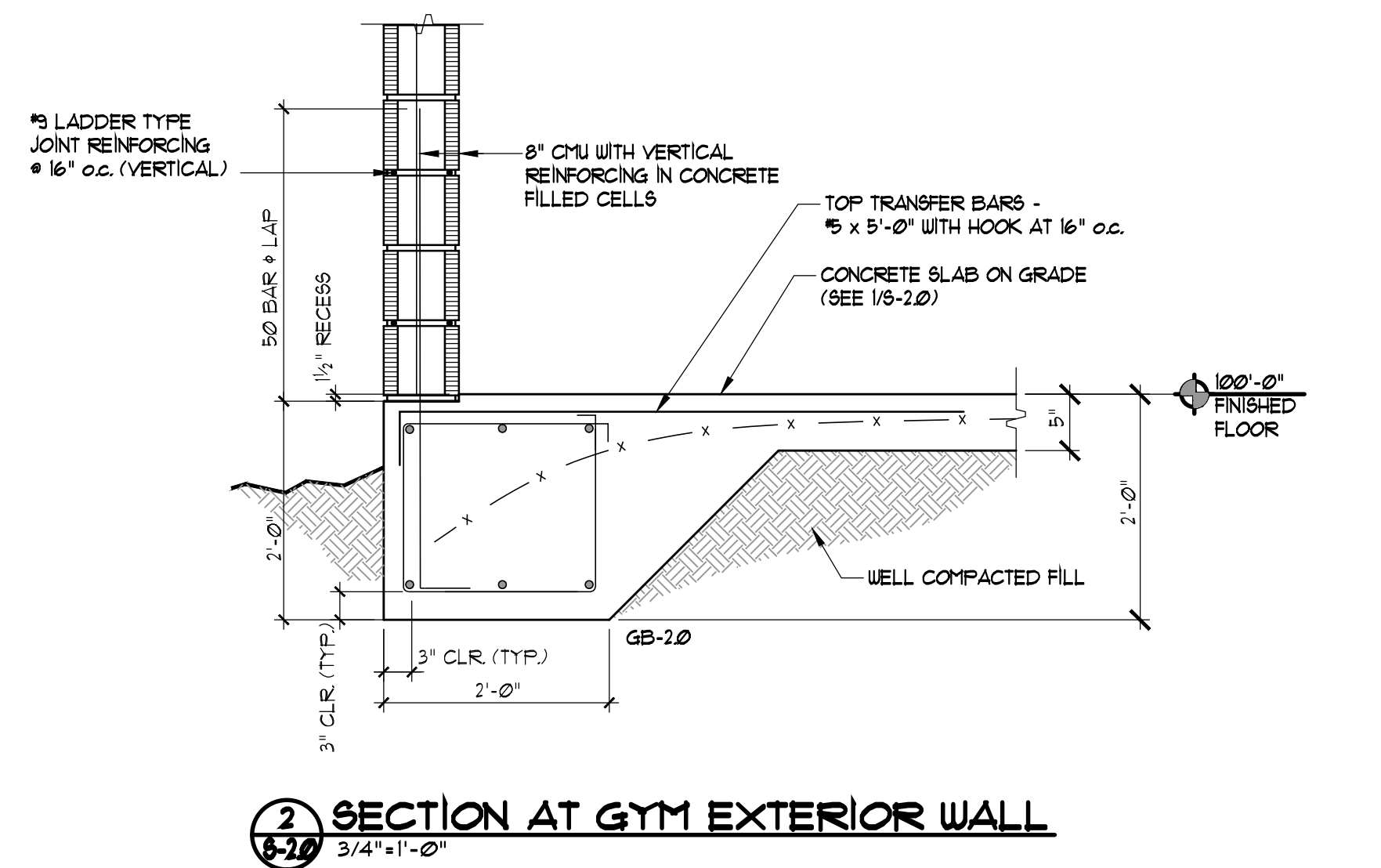


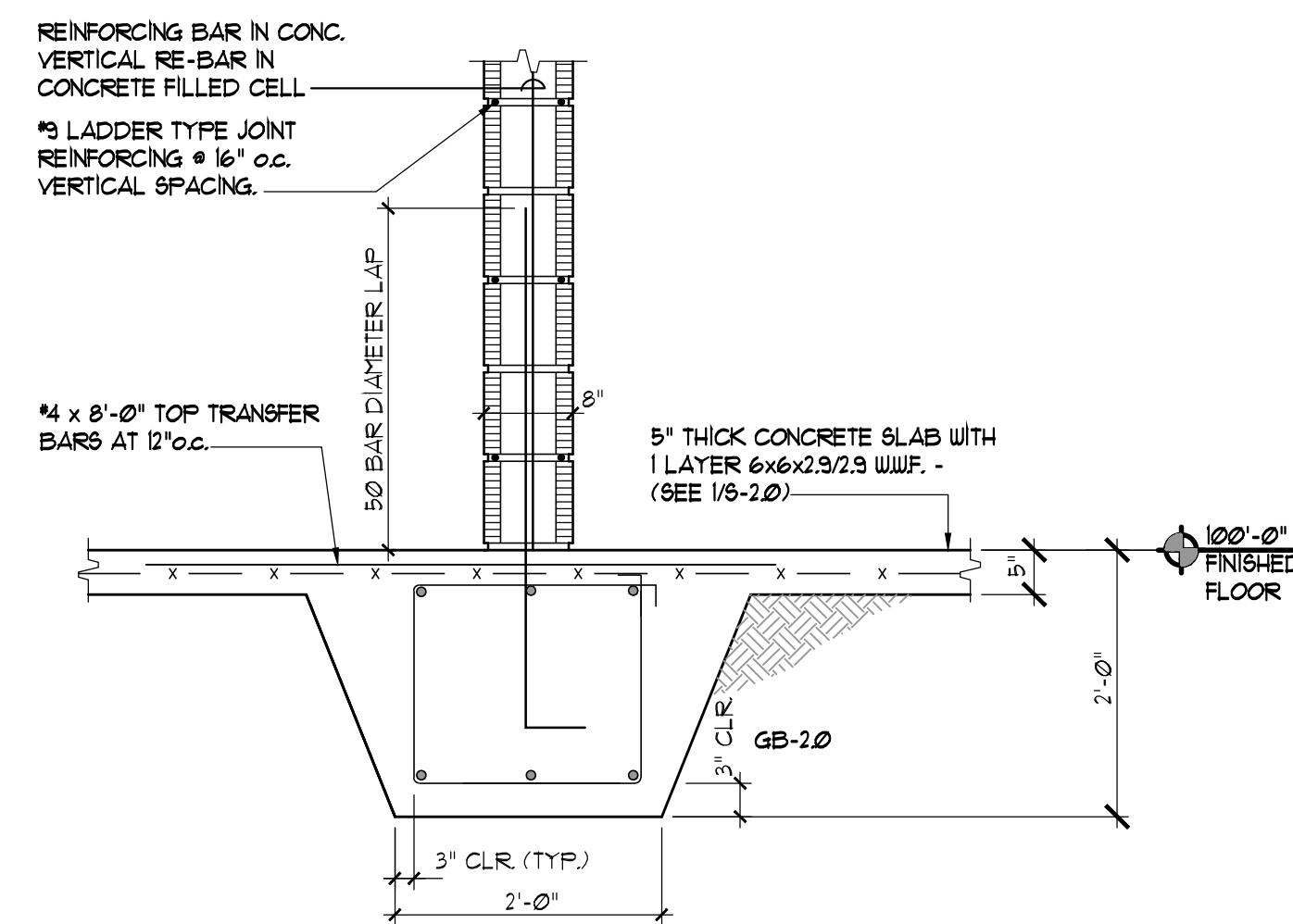
1 SECTION AT GYM EXTERIOR WALL
6-20 3/4"=1'-0"



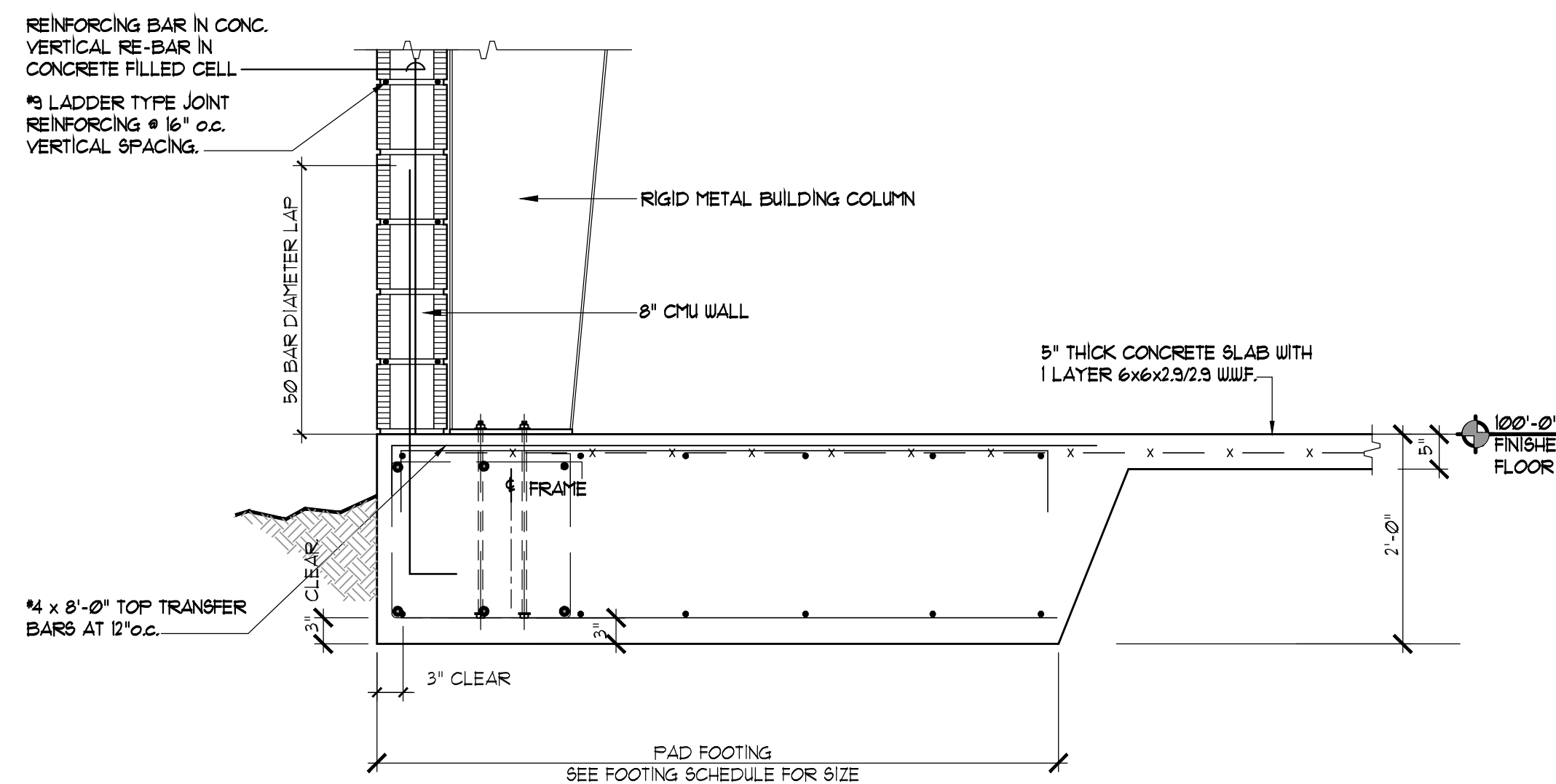
6 SECTION AT GYM / FELLOWSHIP HALL AT PAD FOOTING
6-20 3/4"=1'-0"



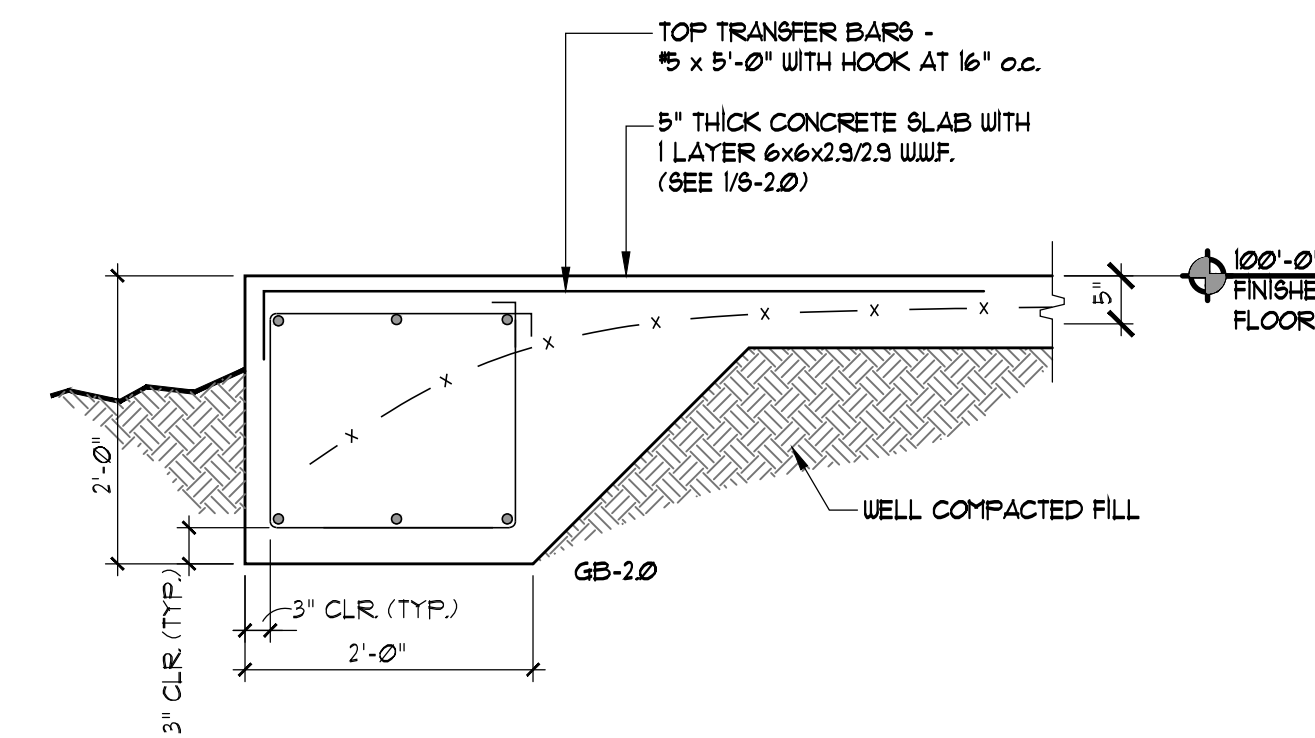
2 SECTION AT GYM EXTERIOR WALL
6-20 3/4"=1'-0"



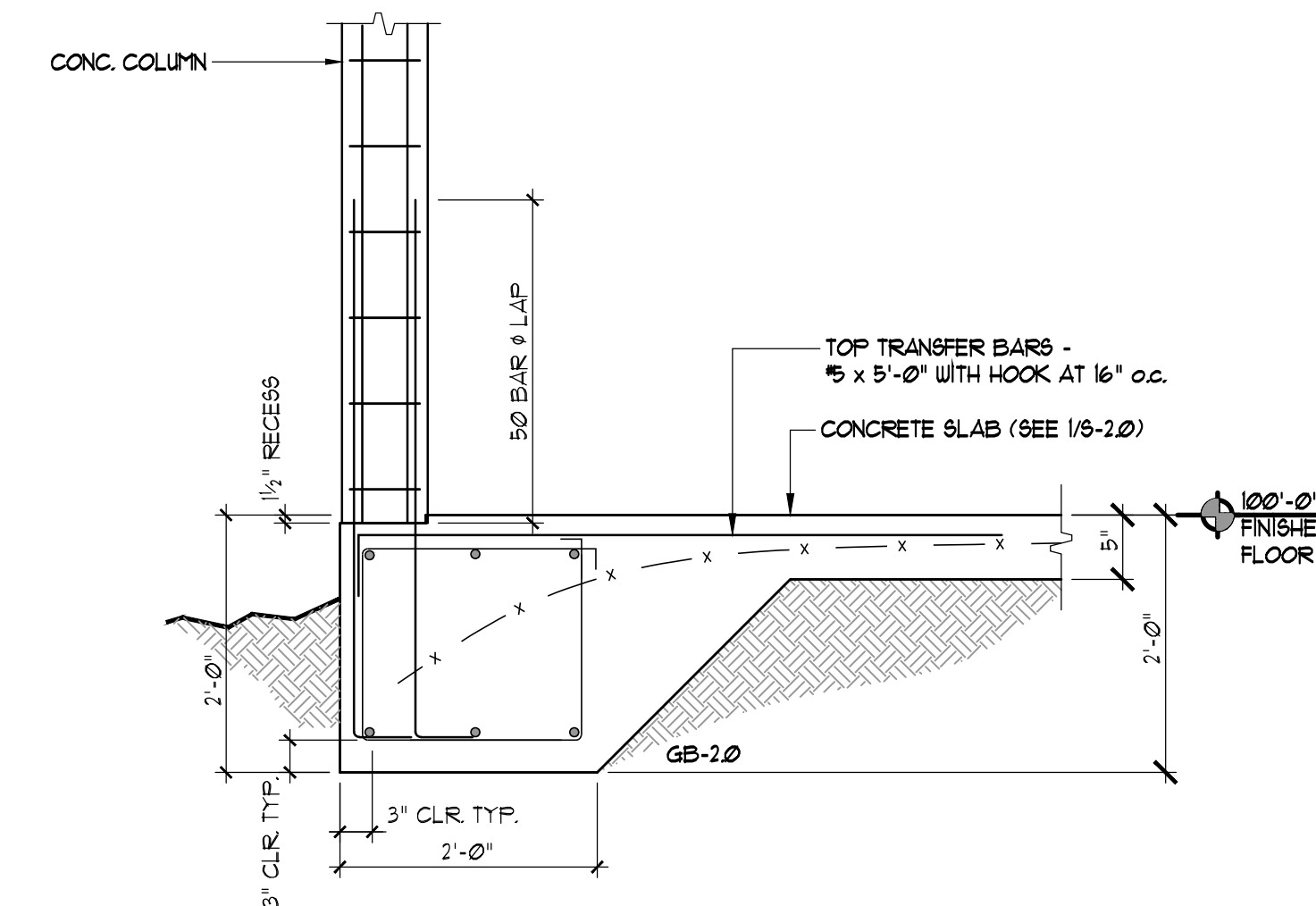
4 SECTION AT GYM / FELLOWSHIP HALL WALL
6-20 3/4"=1'-0"



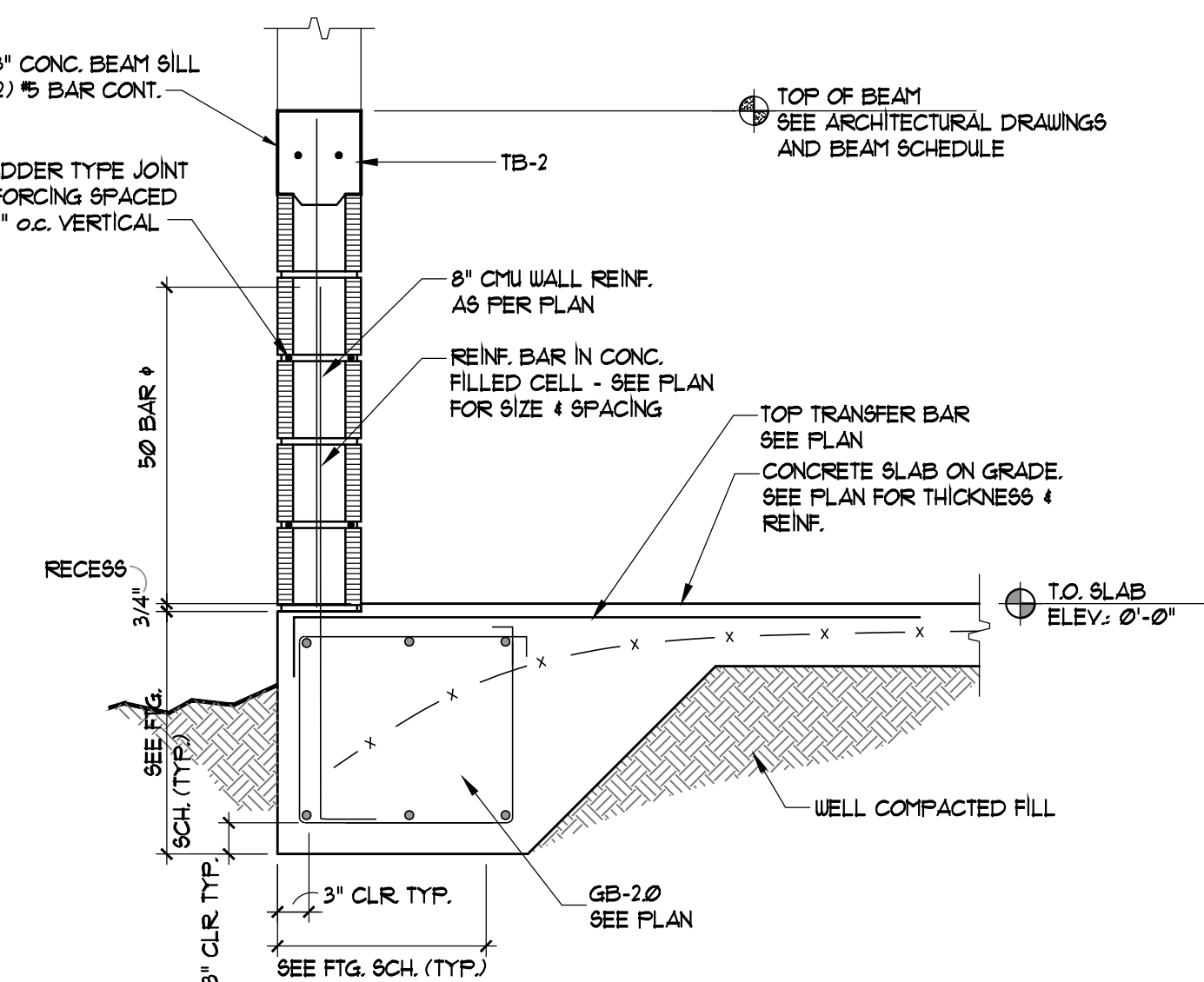
7 SECTION AT MONOLITHIC PAD FOOTING
6-20 3/4"=1'-0"



3 SECTION AT WALL OPENING
6-20 3/4"=1'-0"



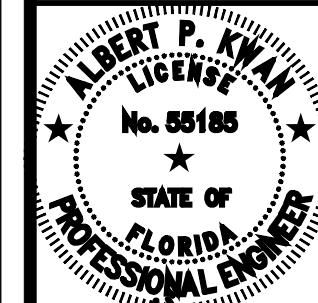
5 SECTION AT CONCRETE COLUMN
6-20 3/4"=1'-0"



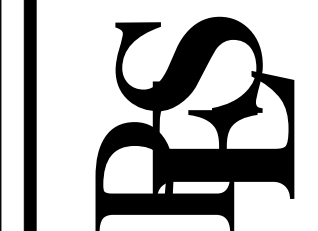
8 SECTION AT GB-20
6-20 3/4"=1'-0"

REVISIONS	BY

KUOPPALA & ASSOCIATES, P.A.
ARCHITECTS
ROBERT E. KUOPPALA
PRINCIPAL ARCHITECT
825 NORTH MURRAY ROAD, SUITE D-10
WEST PALM BEACH, FLORIDA 33416
(561) 682-1000



PERMIT ENGINEERING SERVICES
352 FORTUNE WAY, D-31
WELLSINGTON, FLORIDA 33414
TEL: (561) 325-4384
FAX: (561) 325-4384
CERT# EP-00004993



NEW ATHLETIC / FELLOWSHIP BUILDING
HOBE SOUND BIBLE COLLEGE
11924 S.E. Gomez Av.
HOBE SOUND, MARTIN COUNTY, FLORIDA 33455

DESIGN	OUT
CHECKED	KUOPPALA
DATE	02-23-22
SCALE	AS NOTED
COUNT NO.	18-06
SHEET	8-2.0